

PATIENTS ARE COMPLEX
CHOOSING A STENT
SHOULDN'T BE

INTRODUCING XIENCE Sierra

With the safety you've
always relied on and the
deliverability you've always
wanted, choosing the right
stent is now an easier decision.

START

Information contained herein for distribution outside the U.S. only.

Check the regulatory status of the device before distribution in areas where CE marking is not the regulation in force.

©2017 Abbott. All rights reserved. AP2944678-OUS Rev. A

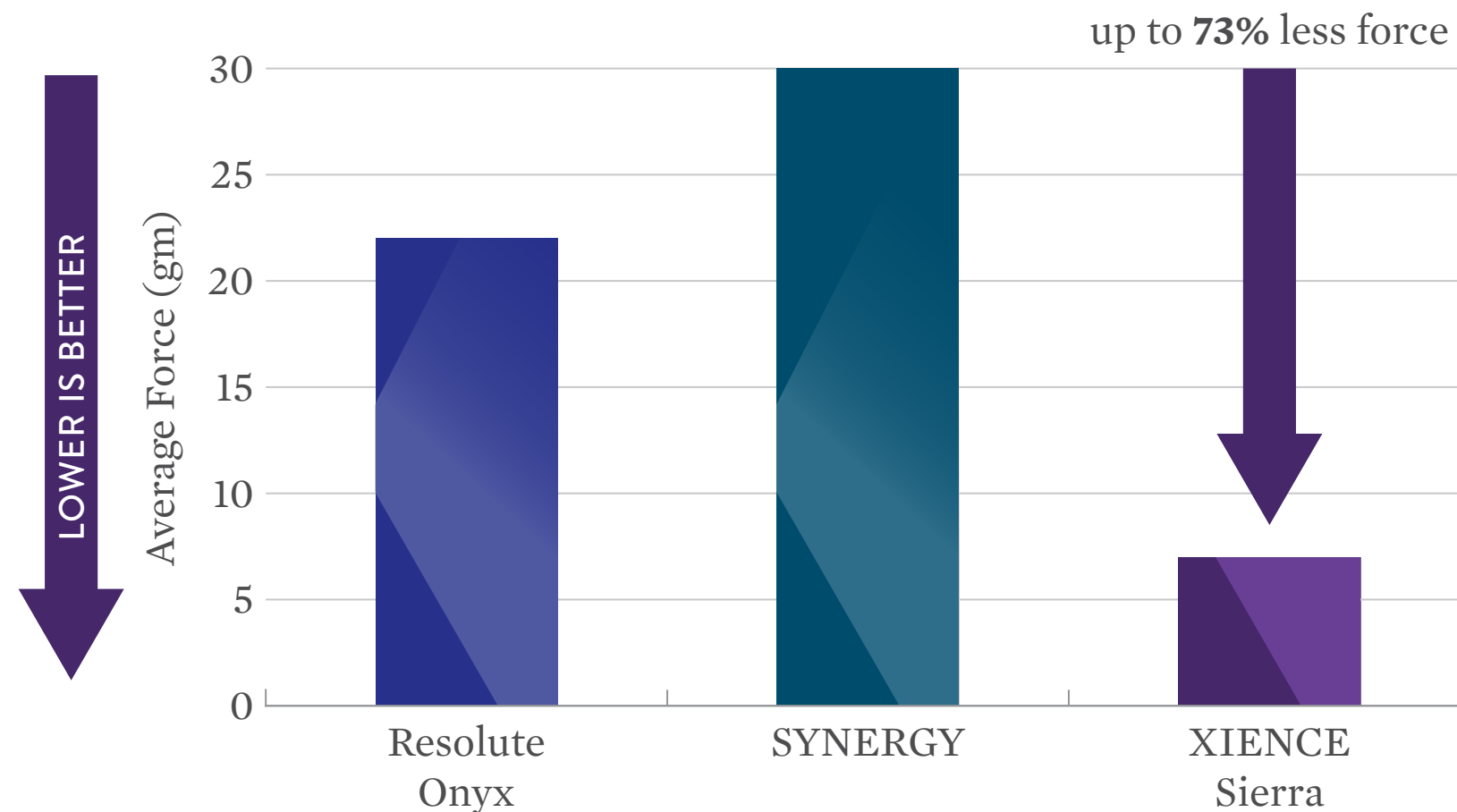
Page 1 of 13

Xience Sierra
Everolimus Eluting Coronary Stent System



Best-in-Class Deliverability¹

XIENCE SIERRA REQUIRES 73% LESS FORCE TO CROSS A LESION THAN SYNERGY AND 64% LESS FORCE THAN RESOLUTE ONYX



1. Bench test data shows that XIENCE Sierra performed better in crossability and was not statistically different in trackability and pushability compared to Resolute Onyx and SYNERGY stents. Bench test results may not necessarily be indicative of clinical performance. Test performed by and data on file at Abbott. Testing performed on XIENCE Sierra Everolimus Eluting Coronary Stent System (3.0 x 18 mm) n=5, SYNERGY Stent System (3.0 x 20 mm) n=5, Resolute Onyx Stent System (3.0 x 18 mm) n=5. Catheter performance crossability test measures average force to cross a challenging lesion model.

Information contained herein for distribution outside the U.S. only.

Check the regulatory status of the device before distribution in areas where CE marking is not the regulation in force.

©2017 Abbott. All rights reserved. AP2944678-OUS Rev. A

Page 2 of 13

Best-in-Class Deliverability¹

For Even the Most Challenging Lesions²

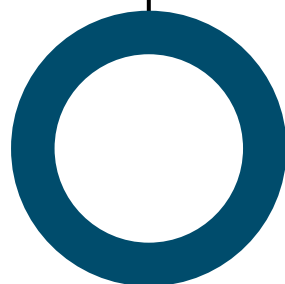
**ULTRA LOW STENT CROSSING PROFILE OF 0.039" FOR
EASIER CROSSING ENABLED BY THE NEW STENT DESIGN
AND BALLOON TECHNOLOGY³**

**XIENCE
Sierra**
0.0390"

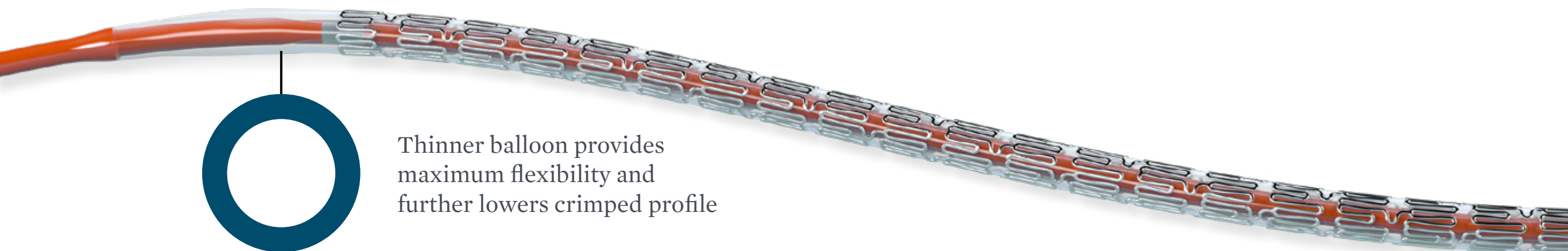
**XIENCE
Alpine**
0.0435"

SYNERGY
0.0393"

**Resolute
Onyx**
0.0401"



Thinner balloon provides
maximum flexibility and
further lowers crimped profile



1. Bench test data shows that XIENCE Sierra performed better in crossability and was not statistically different in trackability and pushability compared to Resolute Onyx and SYNERGY stents. Bench test results may not necessarily be indicative of clinical performance. Test performed by and data on file at Abbott. Testing performed on XIENCE Sierra Everolimus Eluting Coronary Stent System (3.0 x 18 mm) n=5, SYNERGY Stent System (3.0 x 20 mm) n=5, Resolute Onyx Stent System (3.0 x 18 mm) n=5. Catheter performance crossability test measures average force to cross a challenging lesion model.
2. Based on customer feedback on testing XIENCE Sierra in the Synthetic Anatomical Model developed by Abbott.
3. Test performed by and data on file at Abbott. XIENCE Sierra Everolimus Eluting Coronary Stent System (3.0 x 18 mm) n=5, SYNERGY Stent System (3.0 x 20 mm) n=5, Resolute Onyx Stent System (3.0 x 18 mm) n=5.

Information contained herein for distribution outside the U.S. only.

Check the regulatory status of the device before distribution in areas where CE marking is not the regulation in force.

©2017 Abbott. All rights reserved. AP2944678-OUS Rev. A

Page 3 of 13

Best-in-Class Deliverability¹

For Even the Most Challenging Lesions²

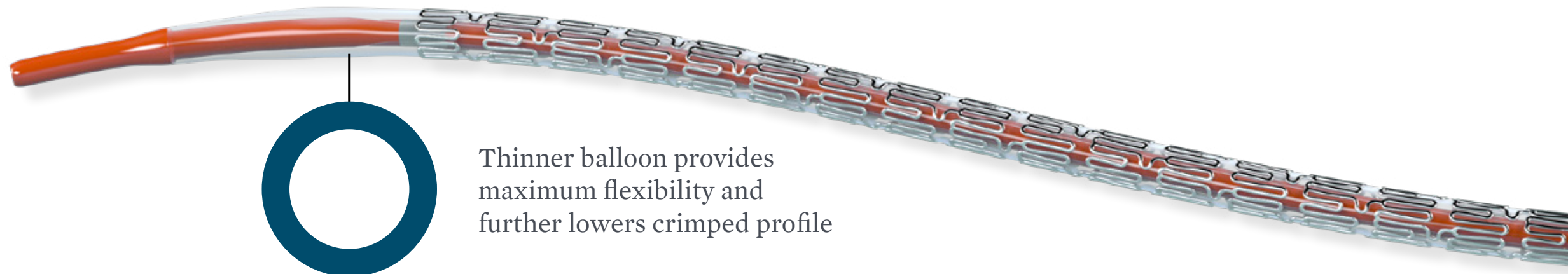
**ULTRA LOW STENT CROSSING PROFILE OF 0.039" FOR
EASIER CROSSING ENABLED BY THE NEW STENT DESIGN
AND BALLOON TECHNOLOGY³**

**XIENCE
Sierra**
0.0390"

**XIENCE
Alpine**
0.0435"

SYNERGY
0.0393"

**Resolute
Onyx**
0.0401"



1. Bench test data shows that XIENCE Sierra performed better in crossability and was not statistically different in trackability and pushability compared to Resolute Onyx and SYNERGY stents. Bench test results may not necessarily be indicative of clinical performance. Test performed by and data on file at Abbott. Testing performed on XIENCE Sierra Everolimus Eluting Coronary Stent System (3.0 x 18 mm) n=5, SYNERGY Stent System (3.0 x 20 mm) n=5, Resolute Onyx Stent System (3.0 x 18 mm) n=5. Catheter performance crossability test measures average force to cross a challenging lesion model.
2. Based on customer feedback on testing XIENCE Sierra in the Synthetic Anatomical Model developed by Abbott.
3. Test performed by and data on file at Abbott. XIENCE Sierra Everolimus Eluting Coronary Stent System (3.0 x 18 mm) n=5, SYNERGY Stent System (3.0 x 20 mm) n=5, Resolute Onyx Stent System (3.0 x 18 mm) n=5.

Information contained herein for distribution outside the U.S. only.

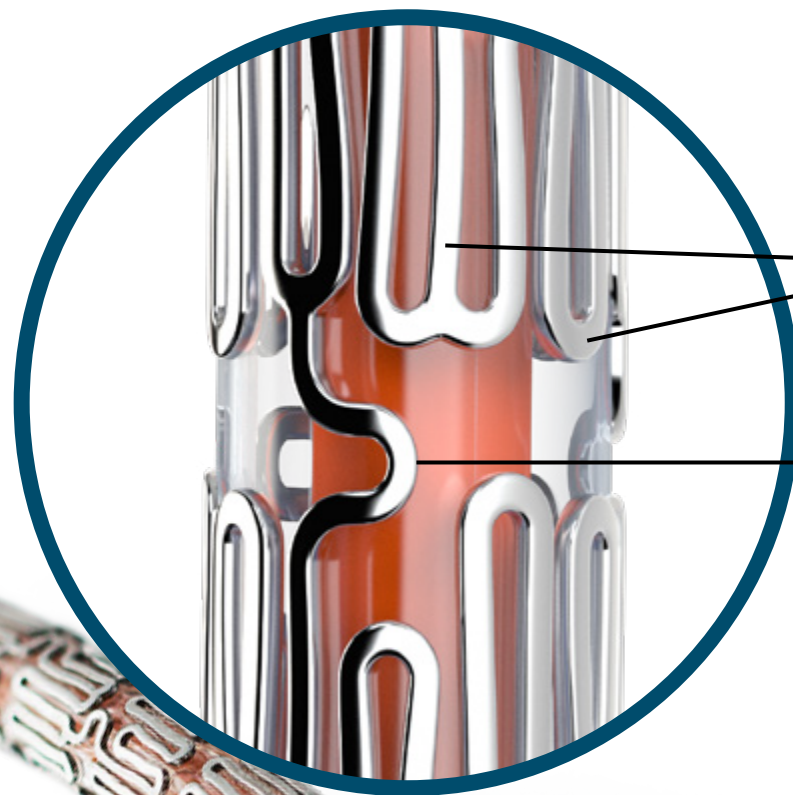
Check the regulatory status of the device before distribution in areas where CE marking is not the regulation in force.

©2017 Abbott. All rights reserved. AP2944678-OUS Rev. A

Page 4 of 13

Best-in-Class Deliverability¹

OPTIMIZED MULTI-LINK STENT DESIGN ALLOWS FOR
TIGHTER CRIMPING AND SMOOTHER CROSSING



NARROWER
CREST

SLIMMER, MORE
FLEXIBLE LINKS

1. Bench test data shows that XIENCE Sierra performed better in crossability and was not statistically different in trackability and pushability compared to Resolute Onyx and SYNERGY stents. Bench test results may not necessarily be indicative of clinical performance. Test performed by and data on file at Abbott. Testing performed on XIENCE Sierra Everolimus Eluting Coronary Stent System (3.0 x 18 mm) n=5, SYNERGY Stent System (3.0 x 20 mm) n=5, Resolute Onyx Stent System (3.0 x 18 mm) n=5. Catheter performance crossability test measures average force to cross a challenging lesion model.

Information contained herein for distribution outside the U.S. only.

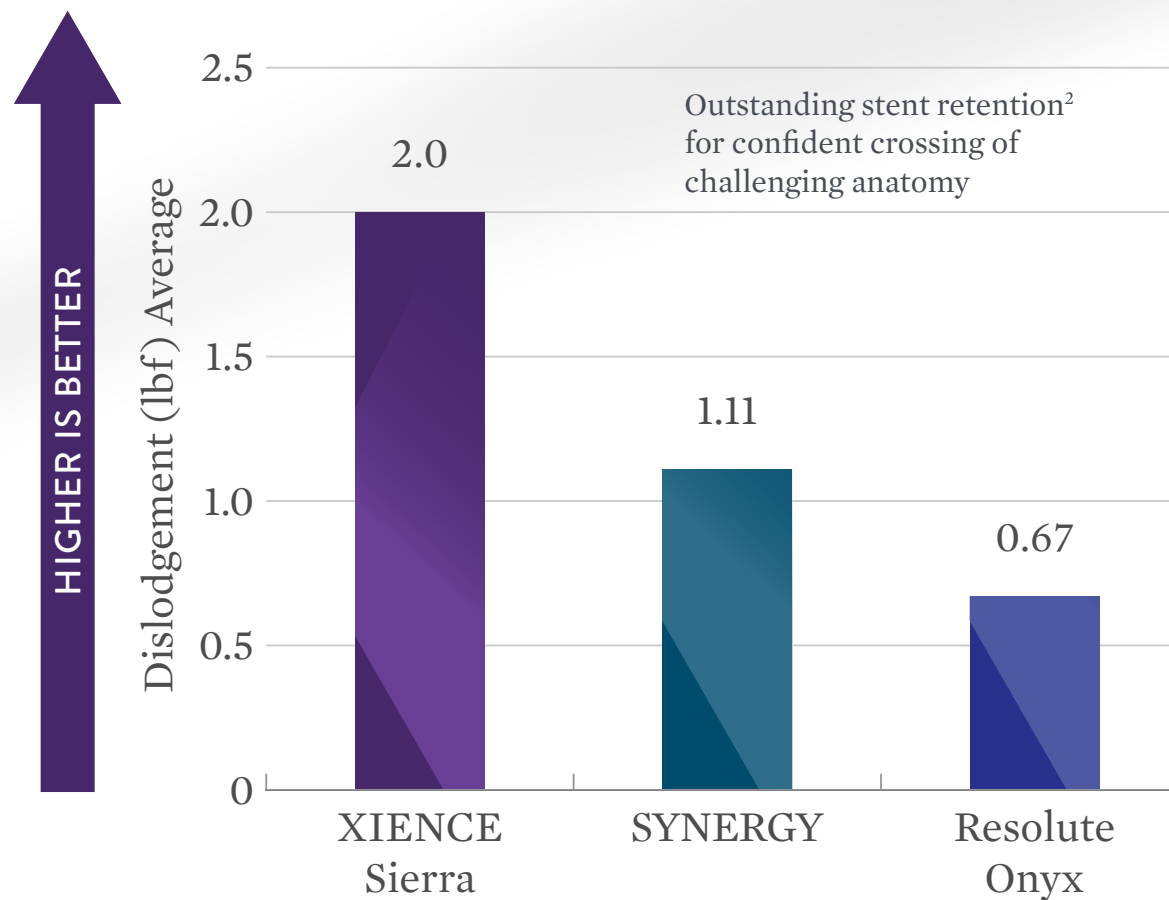
Check the regulatory status of the device before distribution in areas where CE marking is not the regulation in force.

©2017 Abbott. All rights reserved. AP2944678-OUS Rev. A

Page 5 of 13

Best-in-Class Deliverability¹

Re-engineered delivery system ensures consistent force transmission for **outstanding pushability**



1. Bench test data shows that XIENCE Sierra performed better in crossability and was not statistically different in trackability and pushability compared to Resolute Onyx and SYNERGY stents. Bench test results may not necessarily be indicative of clinical performance. Test performed by and data on file at Abbott. Testing performed on XIENCE Sierra Everolimus Eluting Coronary Stent System (3.0 x 18 mm) n=5, SYNERGY Stent System (3.0 x 20 mm) n=5, Resolute Onyx Stent System (3.0 x 18 mm) n=5. Catheter performance crossability test measures average force to cross a challenging lesion model.
2. Test performed by and data on file at Abbott. XIENCE Sierra Everolimus Eluting Coronary Stent System (3.0 x 18 mm) n=5, SYNERGY Stent System (3.0 x 20 mm) n=5, Resolute Onyx Stent System (3.0 x 18 mm) n=5.

Information contained herein for distribution outside the U.S. only.

Check the regulatory status of the device before distribution in areas where CE marking is not the regulation in force.

©2017 Abbott. All rights reserved. AP2944678-OUS Rev. A

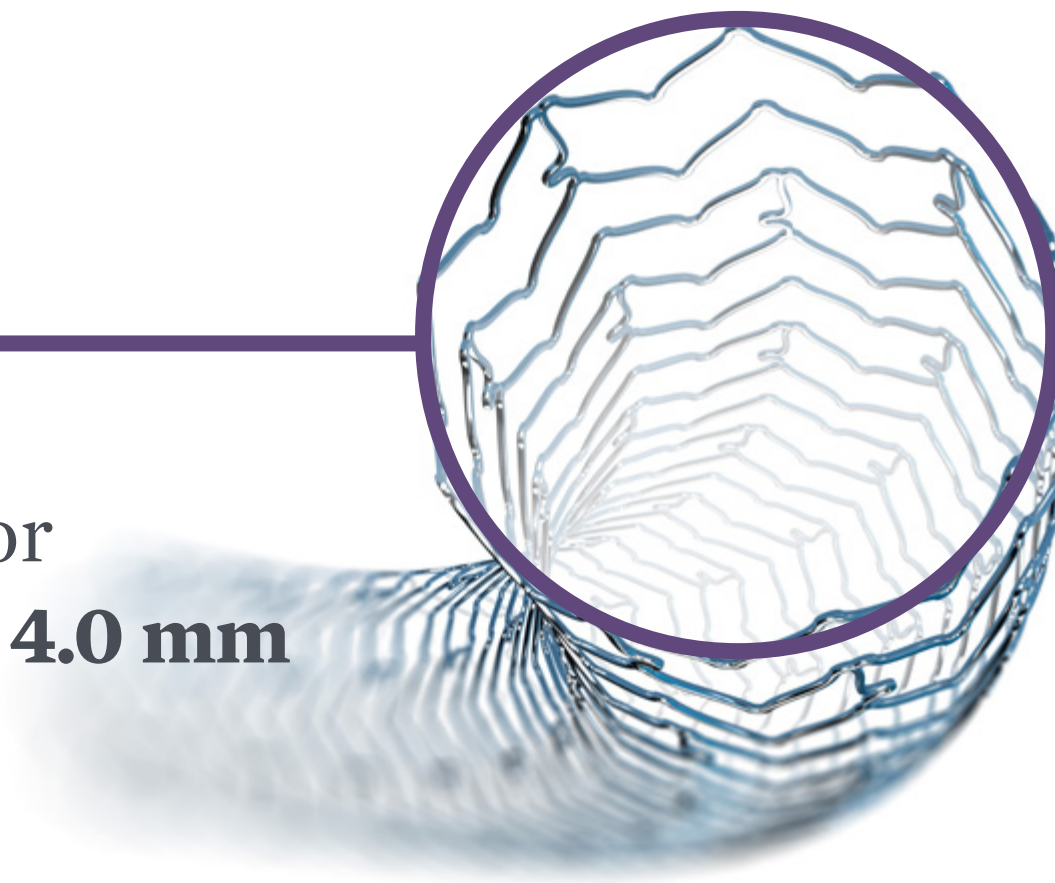
Page 6 of 13

Expanded Treatment Options¹

UNIQUELY DESIGNED TO POST-DILATE TO 5.5 mm

5.5 mm

Maximum
expansion for
3.5 mm and 4.0 mm



1. Increased maximum expansion compared to other XIENCE Everolimus Eluting Coronary Stent System.

Information contained herein for distribution outside the U.S. only.

Check the regulatory status of the device before distribution in areas where CE marking is not the regulation in force.

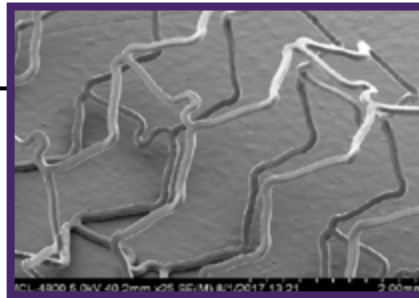
©2017 Abbott. All rights reserved. AP2944678-OUS Rev. A

Page 7 of 13

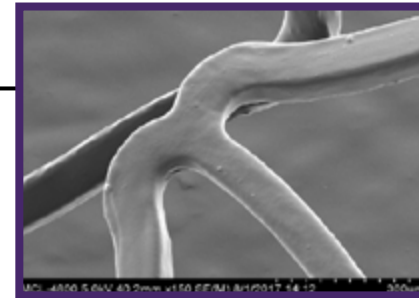
Expanded Treatment Options¹

ENSURES COATING INTEGRITY² EVEN AT MAX EXPANSION

XIENCE Sierra
(3.5 x 18 mm) 25x
magnification at max
expansion of 5.5 mm

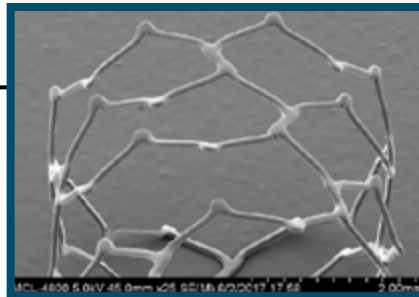


XIENCE Sierra
(3.5 x 18 mm) 150x
magnification at max
expansion of 5.5 mm



XIENCE Sierra
coating remains
intact at maximum
post-dilatation
expansion of 5.5 mm
from 3.5 mm

SYNERGY
(3.5 x 20 mm) 25x
magnification at max
expansion of 4.25 mm

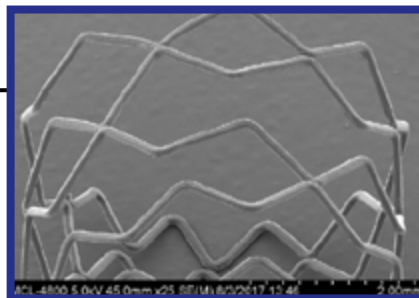


SYNERGY
(3.5 x 20 mm) 150x
magnification at max
expansion of 4.25 mm

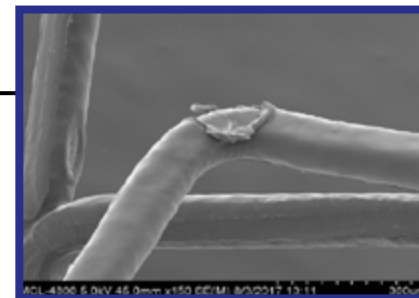


SYNERGY
coating shows
multiple cracks with
delamination at its
max expansion of
4.25 mm from
3.5 mm

Resolute Onyx
(3.5 x 18 mm) 25x
magnification at max
expansion of 4.75 mm



Resolute Onyx
(3.5 x 18 mm) 150x
magnification at max
expansion of 4.75 mm



Resolute Onyx
coating peels
off and shows exposed
metal at its max
expansion of 4.75 mm
from 3.5 mm

1. Increased maximum expansion compared to other XIENCE Everolimus Eluting Coronary Stent System.
2. Test performed by and images on file at Abbott.

Information contained herein for distribution outside the U.S. only.

Check the regulatory status of the device before distribution in areas where CE marking is not the regulation in force.

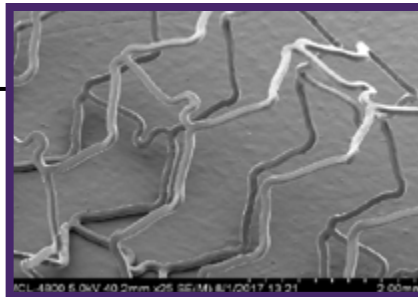
©2017 Abbott. All rights reserved. AP2944678-OUS Rev. A

Page 8 of 13

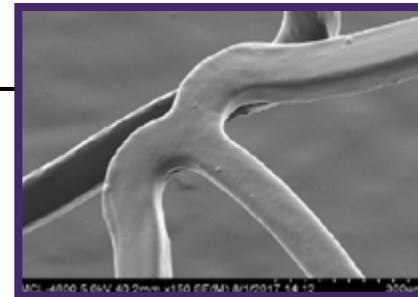
Expanded Treatment Options¹

ENSURES COATING INTEGRITY² EVEN AT MAX EXPANSION

XIENCE Sierra
(3.5 x 18 mm) 25x
magnification at max
expansion of 5.5 mm

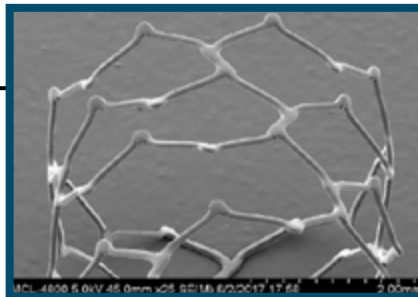


XIENCE Sierra
(3.5 x 18 mm) 150x
magnification at max
expansion of 5.5 mm



XIENCE Sierra coating remains intact at maximum post-dilatation expansion of 5.5 mm from 3.5 mm

SYNERGY
(3.5 x 20 mm) 25x
magnification at max
expansion of 4.25 mm

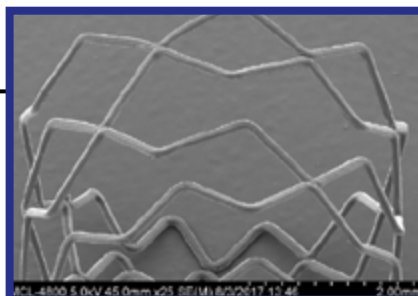


SYNERGY
(3.5 x 20 mm) 150x
magnification at max
expansion of 4.25 mm

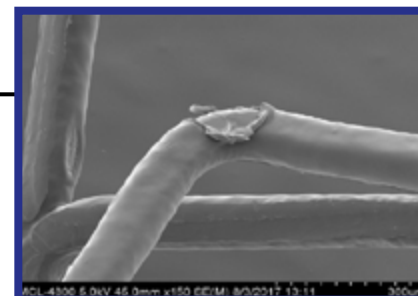


SYNERGY coating shows multiple cracks with delamination at its max expansion of 4.25 mm from 3.5 mm

Resolute Onyx
(3.5 x 18 mm) 25x
magnification at max
expansion of 4.75 mm



Resolute Onyx
(3.5 x 18 mm) 150x
magnification at max
expansion of 4.75 mm



Resolute Onyx coating peels off and shows exposed metal at its max expansion of 4.75 mm from 3.5 mm

1. Increased maximum expansion compared to other XIENCE Everolimus Eluting Coronary Stent System.
2. Test performed by and images on file at Abbott.

Information contained herein for distribution outside the U.S. only.

Check the regulatory status of the device before distribution in areas where CE marking is not the regulation in force.

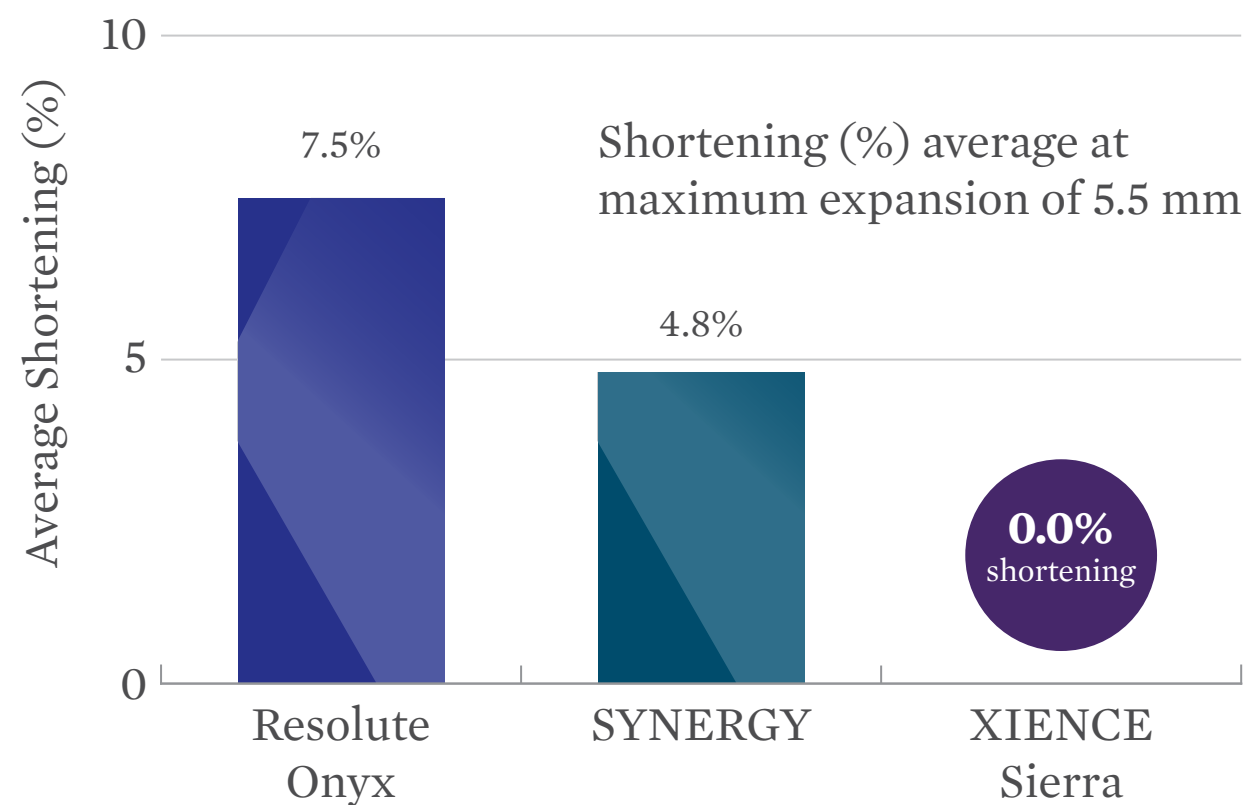
©2017 Abbott. All rights reserved. AP2944678-OUS Rev. A

Page 9 of 13

Expanded Treatment Options¹

PROVIDES UNSURPASSED PRECISION IN PLACEMENT
AND AVOIDS GEOGRAPHIC MISS

ZERO shortening even at
max expansion to 5.5 mm²



1. Increased maximum expansion compared to other XIENCE Everolimus Eluting Coronary Stent System.

2. Test performed by and data on file at Abbott. XIENCE Sierra Everolimus Eluting Coronary Stent System (4.0 x 18 mm) n=5, SYNERGY Stent System (4.0 x 20 mm) n=5, Resolute Onyx Stent System (4.5 x 18 mm) n=5.

Information contained herein for distribution outside the U.S. only.

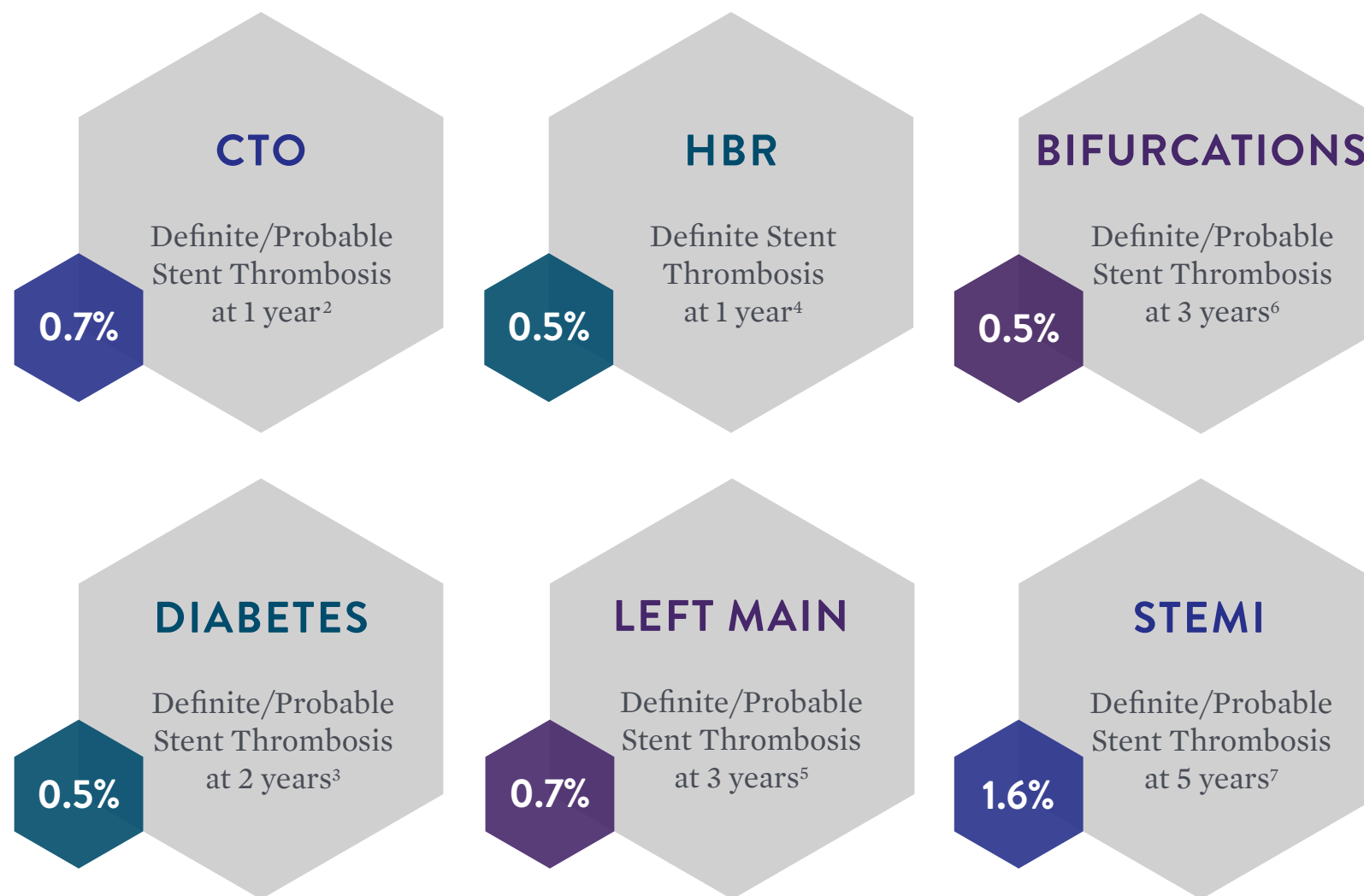
Check the regulatory status of the device before distribution in areas where CE marking is not the regulation in force.

©2017 Abbott. All rights reserved. AP2944678-OUS Rev. A

Page 10 of 13

Unparalleled Safety¹

XIENCE SHOWS CONSISTENTLY LOW STENT THROMBOSIS RATES IN COMPLEX PATIENTS²⁻⁷



NOTE: Data differences depicted between these trials may not be statistically significant or clinically meaningful and different clinical trials may include differences in the patient populations.

1. XIENCE showed significant benefit compared to several DES and composite BMS in multiple large scale meta-analyses and other RCTs. Source: Palmerini, et al. *The Lancet*. 379:9824, 14-20 April 2012, pp. 1393-1402; Bangalore S, et al. *Circ Cardiovasc Interv*, Aug 6, 2013. doi: 10.1161/circinterventions.113.000415; Valgimigli, Effects of Cobalt-chromium Everolimus eluting or bare metal stent on fatal and non-fatal cardiovascular events. A patient-level meta analysis. EuroPCR 2014; Serruys, PW, et al. RESOLUTE All Comers Trial, *NEJM* 2010. Published online June 16, 2010; Fajadet, J., et al. PLATINUM PLUS 30-day Poster, TCT 2012. 2. Teeuwen, K. "Hybrid Sirolimus-eluting Stents with Biodegradable Polymer versus Everolimus eluting Stents with Durable Polymer in Chronic Total Occlusions (PRISON IV)." Presented Nov. 2, 2016 at TCT. 3. U Kaul. "Last Word on DES in Diabetics: Two Year TUXEDO Outcomes." Presented on Oct. 30, 2016 at TCT. 4. de Belder A, et al. XIMA Trial. *JACC*. 2014;63:1371-1375. 5. Stone, G. "EXCEL: A Prospective, Randomized Trial Comparing Everolimus-Eluting Stents and Bypass Graft Surgery in Selected Patients with Left Main Coronary Artery Disease." Presented Oct. 31, 2016 at TCT. 6. Lam, M. Three-year clinical outcome of patients with bifurcation treatment with second-generation Resolute and XIENCE V stents in the randomized TWENTE trial. *American Heart Journal*. Vol 169: No 1, Jan 2015. 7. M. Sabaté. Everolimus-eluting stents versus bare metal stents in ST-segment elevation myocardial infarction. Five-year results of the EXAMINATION Trial. ESC 2015.

Information contained herein for distribution outside the U.S. only.

Check the regulatory status of the device before distribution in areas where CE marking is not the regulation in force.

©2017 Abbott. All rights reserved. AP2944678-OUS Rev. A

Page 11 of 13

Ordering Information

New sizes

STENT DIAMETER	LENGTH								POST-DILATATION LIMIT
	8 mm	12 mm	15 mm	18 mm	23 mm	28 mm	33 mm	38 mm	
2.0 mm	1500200-08	1500200-12	1500200-15	1500200-18	1500200-23	1500200-28	1500200-33	1500200-38	3.75 mm
2.25 mm	1500225-08	1500225-12	1500225-15	1500225-18	1500225-23	1500225-28	1500225-33	1500225-38	3.75 mm
2.5 mm	1500250-08	1500250-12	1500250-15	1500250-18	1500250-23	1500250-28	1500250-33	1500250-38	3.75 mm
2.75 mm	1500275-08	1500275-12	1500275-15	1500275-18	1500275-23	1500275-28	1500275-33	1500275-38	3.75 mm
3.0 mm	1500300-08	1500300-12	1500300-15	1500300-18	1500300-23	1500300-28	1500300-33	1500300-38	3.75 mm
3.25 mm	1500325-08	1500325-12	1500325-15	1500325-18	1500325-23	1500325-28	1500325-33	1500325-38	3.75 mm
3.5 mm	1500350-08	1500350-12	1500350-15	1500350-18	1500350-23	1500350-28	1500350-33	1500350-38	5.50 mm
4.0 mm	1500400-08	1500400-12	1500400-15	1500400-18	1500400-23	1500400-28	1500400-33	1500400-38	5.50 mm

STENT SPECIFICATIONS			DELIVERY SYSTEM SPECIFICATIONS		
Stent Design	MULTI-LINK, 3-3-3, Nonlinear Link		Nominal Pressure	9 atm for 2.0-2.5 mm; 12 atm for 2.75-4.0 mm	
Stent Material	L-605 Cobalt Chromium		Rated Burst Pressure	16 atm for All Diameters	
Drug	Everolimus		Shaft Measurements	Proximal 2.1F/0.71 mm	Distal 2.7F/0.89 mm
Drug Dose	1 µg/mm ²		Min. GC/Sheath Diameter	5F/0.056"/1.42 mm	
Polymer	Fluorinated Copolymer		Balloon Material	Pebax 72D	
Strut Thickness	0.0032"		Crossing Profile	0.039" (3.0 x 18 mm)	
MRI Compatibility	MR Conditional (see IFU for specific conditions)		Tip Entry Profile	0.017" (3.0 x 18 mm)	
Shortening	0% (nominal expansion)		Working Catheter Length	145 cm	
Post-Dilatation Limit	Sizes 2.0-3.25 mm 3.5-4.0 mm	Post-Dil Limit 3.75 mm 5.5 mm			

Information contained herein for distribution outside the U.S. only.

Check the regulatory status of the device before distribution in areas where CE marking is not the regulation in force.

©2017 Abbott. All rights reserved. AP2944678-OUS Rev. A

Page 12 of 13



Caution: This product is intended for use by or under the direction of a physician. Prior to use, reference the Instructions for Use provided inside the product carton (when available), at *efu.abbottvascular.com* or at *Manuals.sjm.com* for more detailed information on Indications, Contraindications, Warnings, Precautions and Adverse Events. **Information contained herein for distribution outside the U.S. only.** Check the regulatory status of the device before distribution in areas where CE marking is not the regulation in force.

Tests performed by and data on file at Abbott. Illustrations are artist's representations only and should not be considered as engineering drawings or photographs. Photos on file at Abbott.

Abbott International BVBA

Park Lane, Culliganlaan 2B, 1831 Diegem, Belgium, Tel: 32.2.714.14.11

XIENCE Alpine, XIENCE Sierra, and XIENCE V are trademarks of the Abbott Group of Companies. Resolute Onyx is a trademark of Medtronic Inc. SYNERGY is a trademark of Boston Scientific Corporation or its affiliates. Pebax is a trademark of Arkema France.

www.Vascular.Abbott

©2017 Abbott. All rights reserved. AP2944678-OUS Rev. A

